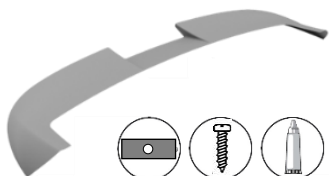



## Included in the package



- > Roof - Lip Spoiler
- > Silicone
- > Screws with Guides

 We highly recommend having your products painted and installed by a specialist.

## Stage one: Painting

### Sanding

Sand the entire product with a **240 dry sandpaper**. Then, air dry or clean all surfaces with nitro thinner.

### Priming

Paint the entire surface of the product with 3-in-1 primer at room temperature (20°- 25°C).

**\* DRYING TIME (at least 3 hours)**

### Stucco Filling

The first priming step will reveal any grazes or spots left on the product's surface. Apply polyester filler (putty) to these.

 **Leave Ventilation Holes** at the bottom side of the product **Open**.

### 2nd Sanding

Repeat the sanding step as indicated above.

### 2nd Priming

Repeat the priming step as indicated above.


### Final Treating

Apply polyester filler to any final grazes or spots left. Then, sand the surface of the product with a **600 grit sandpaper**.



### Final Painting

Clean thoroughly the product and paint it with the final acrylic paint according to the car's paint code.

 **Painting temperature should not exceed 40° C.**

## Stage two: Installation

### Resources needed!



Pencil - Tape Measure - Screwdriver – Cloth



At least two people



Around 40 min

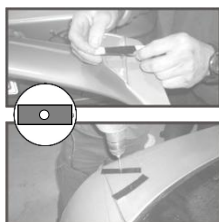
### Centering



Measure and center the spoiler on the car. Then, draw a pencil outline on the surface of the car around the product's edges.

**⚠ The distance between the spoiler's edge and a reference point on your car (i.e., rear lights) should be equal for each side.**

### Drilling



Remove the spoiler and insert the guides in its holes. Then, remove the foil from the stickers. Place the spoiler back on the vehicle, following the outline, and press it so that the guides stick on it. Drill through the guides ( $\varnothing$  3 mm drill), then remove them and enlarge the holes ( $\varnothing$  7 mm drill).

### Attaching



Apply silicone (included in the package) over the product's surface that attaches to the car\*.

Re-center the spoiler on the car following the drawn outline from the previous step.

**⚠ Do not apply silicone to Ventilation Holes at the bottom side of the product.**

### Securing

Screw from the bottom side of the vehicle's surface to the top, while pressing the spoiler.

### Vehicle Use

The vehicle is now ready to be used according to the instructions below.



12h



24h



48h